

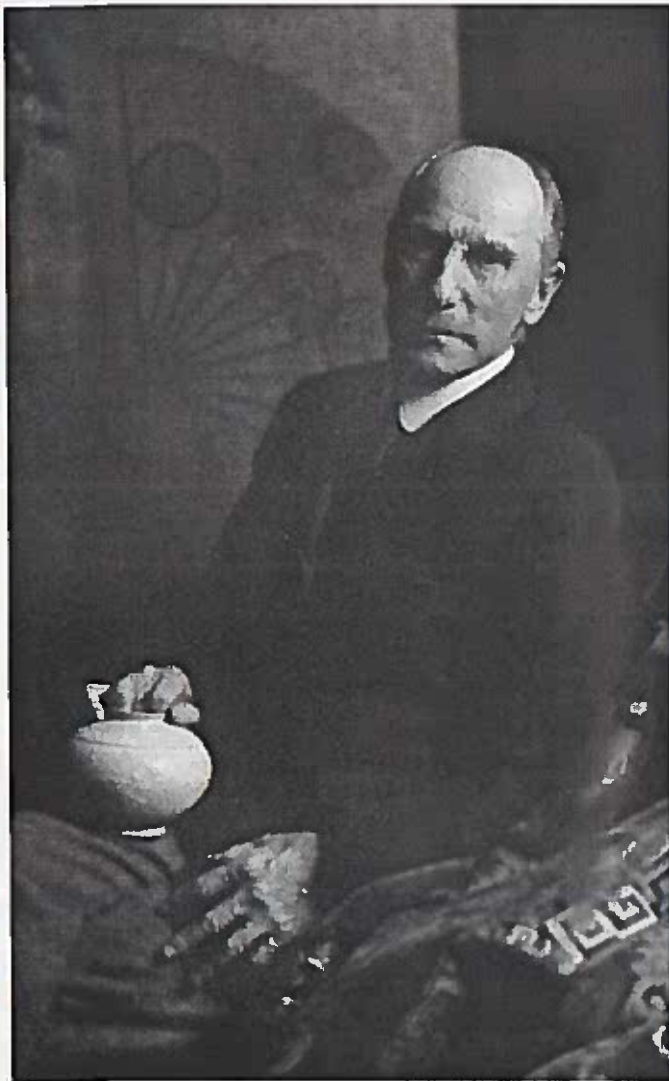
*The Friends of the Freer House*

*and*

*The Merrill-Palmer Institute*

**WAYNE STATE  
UNIVERSITY**

*present*



*Charles Lang Freer:  
The Patron of  
Pewabic Pottery*

*A Lecture By:*

*Dr. Thomas Brunk*

*Historian and Authority  
on the Charles Lang Freer House*

*A discussion of the nuances of the unique relationship between art connoisseur Charles Lang Freer and artist Mary Chase Stratton, and how Pewabic became the only western ceramic included in the Freer collection.*

*January 29<sup>th</sup>, 2006*

*Merrill-Palmer Institute*

*71 E. Ferry*

*3-5pm*

*Tours of the Freer House*

*Lecture*

*Light Reception*

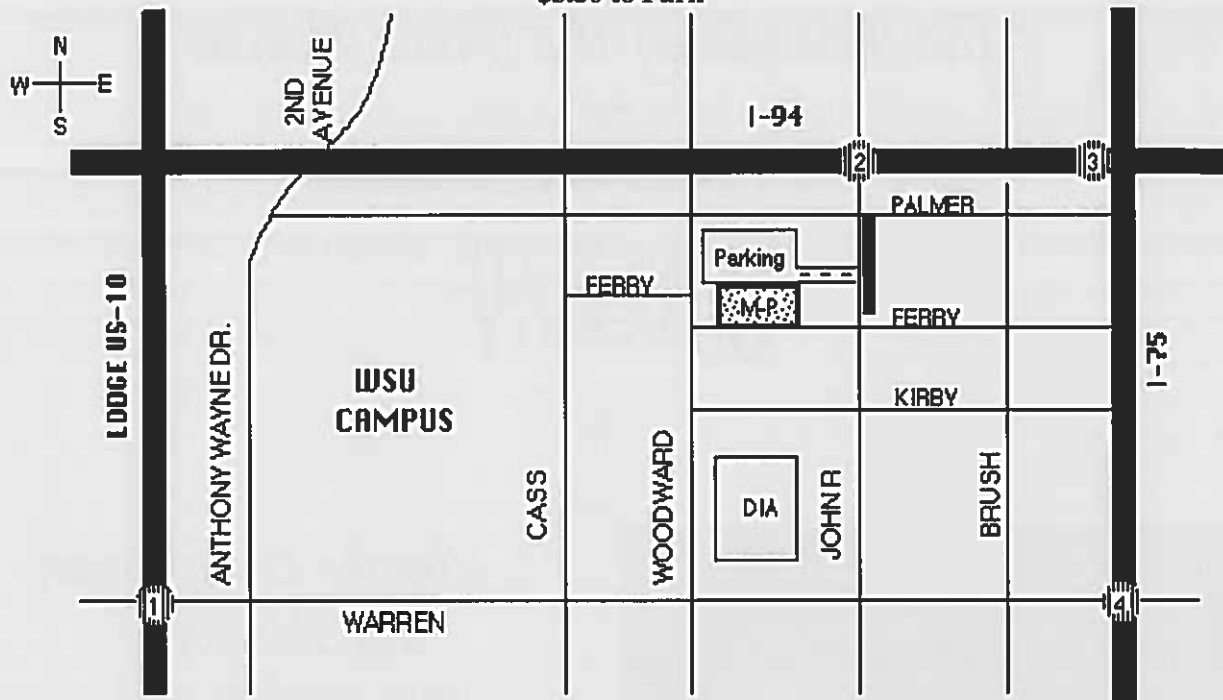
*Please RSVP (313) 872-1790*

# DIRECTIONS TO THE FREER HOUSE

71 East Ferry \* Detroit, MI \* 48202

Enter Parking Lot off John R.

\$3.50 to Park



## EXITS

- |  |   |
|--|---|
|  1 Forest Ave./Warren                      |  3 Woodward/Brush (From East I-94 Only) |
|  2 Woodward/John R. (From West I-94 Only) |  4 Warren                              |