

REGISTER TODAY
SCAN ME



Issues in Aging 2024

Monday April 29, 8:00 am - 3:45 pm

Navigating Challenges in Aging

6 CREDITS for Social Workers, Nurses, Physical Therapists, Occupational Therapists, Case Managers, OTAs, PTAs

COST (Breakfast and lunch are included):

\$65 Professionals

\$40 Students (No CEs issued)

LIVE EVENT, JOIN US IN PERSON:

VisTaTech Center at Schoolcraft College

18600 Haggerty Rd, Livonia, MI 48152

Thank you to our supporters

PREMIER PARTNER



Access

AgeWays (AAA1B)

Angela Hospice

Avalon Senior Living Communities

BrightStar Care

Center for Financial Planning

CorsoCare

Heart to Heart Hospice

Henry Ford Health System

C.A.R.E. Program

Hospice of Michigan

Jewish Senior Life

PACE of Southeast Michigan

Pharmacare Drugs

Presbyterian Villages of Michigan

Right at Home

Senior Caregiver Resource

Network (SACRN)

Senior Helpers

Team Suzy

The Senior Alliance (AAA1C)

Waltonwood Senior Communities

AGENDA

8:00 am – Light Breakfast, Visit Vendors

8:30 am – **Medication Management: One Too Many Prescriptions**

10:00 am – Break, Networking, Visit Vendors

10:30 am – **Partnering with Families of Hospitalized Persons with Dementia: Lessons Learned**

Noon – Lunch

12:45 pm – **CAPABLE: An Interdisciplinary Approach to Aging in Place**

2:15 pm – **Structural Insights into the Neuropathology of Frontotemporal Dementia and ALS**

3:45 pm – Raffle Drawings, Closing



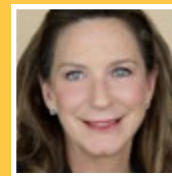
GARWOOD



BOLTZ



GOODENOW



FORD



BARMADA

– DETAILS ON NEXT PAGE –

**Medication Management:
One Too Many Prescriptions**

8:30 AM



Candice Garwood, PharmD, FCCP, BCPS, BCACP, Clinical Professor College of Pharmacy and Health Sciences, Wayne State University

Polypharmacy in geriatric patients refers to the concurrent use of multiple medications by these individuals. This is a common concern as it can lead to various issues such as increased risk of adverse drug reactions, drug interactions, and medication non-adherence. It is important for healthcare providers to regularly review the medication regimen of older adults to ensure the appropriate and safe use of medications.

Objectives:

- Discuss polypharmacy in geriatric patients.
- Develop strategies to reconcile medication therapies and minimize adverse drug events.
- Identify and list resources to optimize patient safety and medication use.

**Partnering with Families of Hospitalized Persons
with Dementia: Lessons Learned** 10:30 AM



Marie Boltz, PhD, GNP-BC, FGSA, FAAN, Eberly Endowed Professor, College of Nursing, Pennsylvania State University

Partnering with families of hospitalized persons with dementia is crucial for providing comprehensive and person-centered care. Through our experience, we have learned that open communication, education, and involving families in decision-making can greatly improve the well-being of the patient and enhance their overall hospital experience.

Objectives

- Discuss the critical role of family in the life of the person living with dementia.
- Describe challenges and rewards for family carers.
- Describe the state of the science related to interventions for family carers of persons living with dementia.
- Discuss the family carers' relationship with the health care system, including acute care.
- Discuss emerging issues in research, practice, and policy affecting the family living with dementia.

**CAPABLE: An Interdisciplinary Approach
to Aging in Place**

12:45 PM



GOODENOW FORD

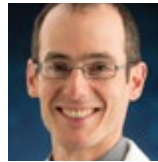
Amanda Goodenow, MS, OTR/L, Strategic Partnership Coordinator, and **Tricia Ford**, BA, VP of Operations, CAPABLE National Center, CO

CAPABLE is an interdisciplinary program aimed at supporting older adults to comfortably stay in their homes. It combines expertise in occupational therapy, nursing, and home repair services to address the unique needs and challenges faced by older adults. By providing holistic support, CAPABLE promotes independence and enhances the overall quality of life for older adults aging in place.

Objectives:

- Describe the evidence that supports CAPABLE.
- Describe the program components and the team.
- Describe how CAPABLE addresses equity and promotes self-efficacy.

**Structural Insights into the Neuropathology
of Frontotemporal Dementia & ALS** 2:15 PM



Sami Barmada, MD, PhD – Welch Research Professor and Associate Professor of Neurology, University of Michigan; Director of Michigan Brain Bank

Studies have shown that in frontotemporal dementia (FTD) and amyotrophic lateral sclerosis (ALS), there is a common pattern of cortical atrophy, particularly in the frontal and temporal lobes. Imaging techniques have detected abnormal protein aggregates in specific brain regions, further linking the structural changes to the neuropathology of these diseases. Understanding the structural aspects of FTD and ALS provides insights into their pathogenesis and has potential to guide the development of targeted therapies.

Objectives

- To describe the unique neuropathology of frontotemporal dementia (FTD) and amyotrophic lateral sclerosis (ALS), and the clues this provides to disease pathogenesis.
- To illustrate how this pathology can be recapitulated in a laboratory environment, and what this tells us about the origins of disease.
- Clarify mechanisms contributing to FTD/ALS, and new approaches to blocking neurodegeneration.

